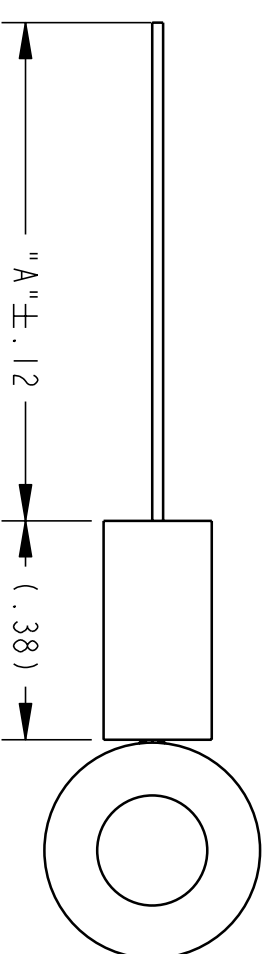
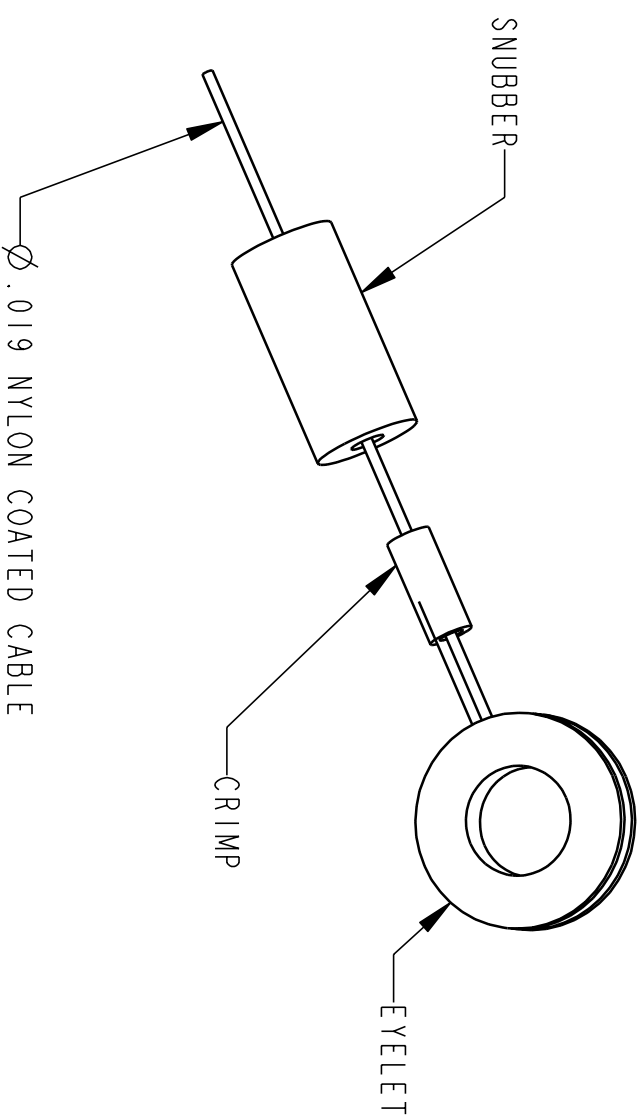


REVISIONS			
REV.	DESCRIPTION	DATE	APPROVED
B	SEE DCN # 3258		



RANGE	"A"
3	4.50
9	10.37
15	16.5
30	31.5

		UNLESS OTHERWISE SPECIFIED		DIMENSIONS AND TOLERANCES PER ANSI Y14.5		THIRD ANGLE PROJECTION		CeleSCO 20630 Plummer St. Chatsworth, CA. 91311 Transducer Products, Inc. Tel (818) 701-2750 Fax (818) 701-2799	
NEXT ASSEMBLY	USED ON	REMOVE BURS AND SHARP EDGES: .005-.015	UNLESS OTHERWISE SPECIFIED, DIMENSIONS ARE IN INCHES, TOLERANCES ARE:	DECIMALS:	ANGLES:	APPROVALS	DATE	SIZE	CODE IDENT. NO.
APPLICATION		MACHINED FILLET RADIUS TO BE: .003-.010	PERPENDICULAR SURFACES TO BE WITHIN:	.XX ± .01	X.X° ± 1.0°		02/13/02	B	52158
MATERIAL		ALL Ø ON COMMON & TO BE WITHIN: .005 T.I.R.	PERPENDICULAR SURFACES TO BE WITHIN:	.XXX ± .005	X.XX° ± 0.5°			CHRD	
FINISH				MACHINED SURFACE FINISH: $\sqrt{125}$		TITLE		SCALE:	SHEET
						CABLE ASSEMBLY MODEL MT2A		NONE	1 OF 1

1) SEE PS-30 FOR PART NUMBERS.

NOTES: UNLESS OTHERWISE SPECIFIED

celesco Transducer Products		DRAWING CHANGE NOTICE			DRAWING NO. 603933	REV. B		
					SHEET 1 OF 1			
DISPOSITION OF PARTS	USE AS IS	MUST CONFORM	PART NAME CABLE ASSEMBLY MODEL MT2A		DCN NO. 3258			
IN FABRICATION	X		ENGINEERING APPROVAL			SIGN-OFFS	SIGNATURE	DATE
IN STOCK	X			SIGNATURE	DATE	PROCESS ENGINEER		
BOXED PARTS	X		PREPARED BY	G. Ennis		INSPECTION		
IN ASSEMBLIES	X		CHECKED BY			PLANNING		
IN BOND	X		APPROVED			PURCHASING		
CUSTOMER REWORK	X		GEN MGR			PRODUCTION		
			DCR NO. (IF APPLICABLE)	XXXX		SALES		
CHANGE NO.	REVISED OR CHANGED FROM			ZONE	ADDED OR CHANGED TO			
1	5				4.5			
2	11				10.37			
3	17				16.50			
4	32				31.50			
5								
6								
7								
8								
9								
REASON								
THE LENGTH OF THE CABLE WAS INCORRECT.								
REMARKS								

DRAWING NO. 603933